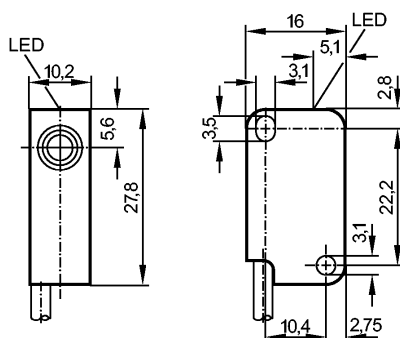


IS5001

IS-3002-BPOG

Inductive sensors



Made in Germany



Product characteristics

Inductive sensor

Rectangular, plastics

Cable

Sensing range 2 mm; [f] flush mountable

Electrical data

Electrical design	DC PNP
Operating voltage [V]	10...36 DC; "supply class 2" to cULus.
Current consumption [mA]	15; (24 V)
Protection class	III
Reverse polarity protection	no

Outputs

Output function	normally open
Voltage drop [V]	< 1
Current rating [mA]	200
Short-circuit protection	no
Overload protection	no
Switching frequency [Hz]	800

Range

Sensing range [mm]	2
Real sensing range (Sr) [mm]	2 ± 10 %
Operating distance [mm]	0...1.6

Accuracy / deviations

Correction factors	mild steel = 1 / stainless steel approx. 0.7 / brass approx. 0.4 / Al approx. 0.3 / Cu approx. 0.2
Hysteresis [% of Sr]	1...15
Switch-point drift [% of Sr]	-10...10

Environment

Ambient temperature [°C]	-25...80
Protection	IP 67

Tests / approvals

EMC	EN 60947-5-2 EN 55011: class B
MTTF [Years]	3044

Mechanical data

IS5001

IS-3002-BPOG

Inductive sensors

Mounting		flush mountable
Housing materials		PBT
Tightening torque	[Nm]	< 0.5 (with washer)
Weight	[kg]	0.043

Displays / operating elements

Output status indication	LED	yellow
--------------------------	-----	--------

Electrical connection

Connection		PVC cable / 2 m; 3 x 0.14 mm ²
------------	--	---

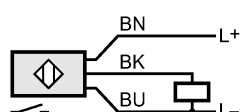
Wiring

Core colours

BN brown

BU blue

BK black



Remarks

Pack quantity	[piece]	1
---------------	---------	---