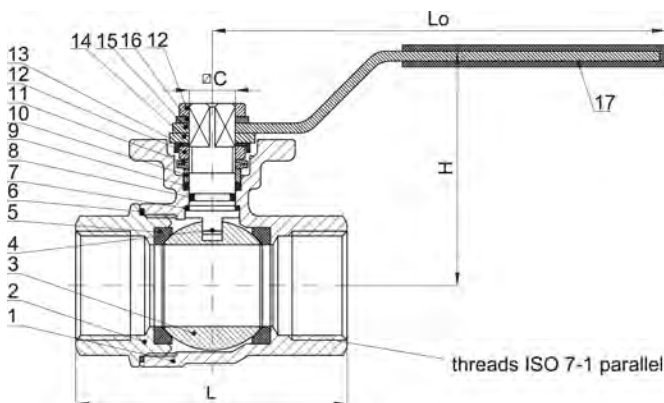


Parts list			
Pos	Qty	Description	Material
1	1	Body	AISI 316
2	1	Cover	AISI 316
3	1	Ball	AISI 316
4	1	Stem	AISI 316
5	2	Seat	PTFE+glass
6	1	Body gasket	PTFE
7	1	Washer	PTFE
8	2	Packing	PTFE
9	1	Gland	AISI 304
10	1	Washer	AISI 304
11	1	Nut	AISI 304
12	1	Locking dev.	AISI 304
13	1	Handlever	AISI 304
14	1	Sleeve	Plastic

Dimensions [mm]											
	1/4"	3/8"	1/2"	3/4"	1"	1 1/4"	1 1/2"	2"	2 1/2"	3"	
L	47	49	58	66	77	90	98	121	145	166	
Lo	102	102	102	124	124	152	152	190	242	242	
H	48	48	52	61	65	79	83	97	135	144	

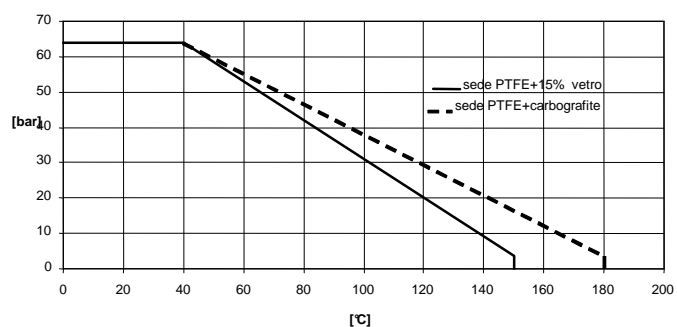


Parts list			
Pos	Qty	Description	Material
1	1	Body	AISI 316
2	1	Sleeve	AISI 316
3	1	Ball	AISI 316
4	1	Stem	AISI 316
5	2	Seat	PTFE+glass
6	1	Body gasket	PTFE
7	1	Washer	PTFE
8	1	O-ring	FKM
9	2	Packing	PTFE
10	1	Gland	AISI 304
11	2	Spring	AISI 304
12	2	Nut	AISI 304
13	1	Blocking washer	AISI 304
14	1	Lockable plate	AISI 304
15	1	Handlever	AISI 304
16	1	Washer	AISI 304
17	1	Sleeve	plastic

Dimensions [mm]									
	1/4"	3/8"	1/2"	3/4"	1"	1 1/4"	1 1/2"	2"	
L	50	50	55	71	83	91	103	120	
Lo	110	110	110	138	138	158	158	203	
H	55	55	57	62	65	79	84	92	
∅C	9	9	9	11	11	14	14	14	
ISO 5211	F03	F03	F03	F04	F04	F05	F05	F05	F07

P/T range ⁽¹⁾

⁽¹⁾ non shock pressure



in 2 pezzi - in 3 pezzi - wafer - split body - a 3 vie - accoppiamento diretto ISO 5211